



OFFICE OF
SUSTAINABILITY
A Division of Develop Louisville

2015 Sustainability Summit: Improving Our Air Quality
November 6, 2015
Kentucky Center for African American Heritage
Afternoon Breakout Session Notes
Track 4: Natural Systems

Question 1 (Strengths)

Top 3 strengths shared at report-out

1. Louisville has large conservation lands protected from development
2. Good data driven decision making tools exist (STAR, urban tree canopy, asthma, heat island)
3. Good public-private partnerships

All provided strengths:

- Workable size (land)
- Medical, science, tech
- Good partnerships, public / private
- Parks – urban nature
- Promote data-driven decisions
- Usable land available
- Value placed on quality of life

Question 2 (Challenges/weaknesses)

Top 3 challenges/weaknesses shared at report-out

1. Geography
2. Lack of \$ incentives (land use, care culture, building codes)
3. Lack of awareness that leads to resistance to change
4. Moral inertia

All provided challenges/weaknesses:

- Lack economic incentive structures (the funding to make change)
- The car culture
- Resistance to change
- Development centric land use code
- Geography
- Lack of public awareness
- Disenfranchised by lack of power
- Degraded natural systems

Question 3 (Short-Term Actions)

Top 3 short term actions shared at report-out

1. Implement planting projects that are hands-on learning opportunities
2. Adopt powerful tree protection and land use ordinances
3. Pilot small grant opportunities to help improve natural system services

All provided short term actions:

- Pilot ozone reduction [NO_x + VOC + sunshine = ozone]
- Pilot cool, green, blue
- Action-oriented environmental education
- Plant stuff based on natural system services
- Strategy to incentivize reduced vehicle travel
- Small grants to small businesses to reduce emissions
- Empower coordinated with LSC and Sustainability Office
- Powerful tree protection and land use code (ordinance)
- Planting projects to educate and engage and collect data

Question 4 (Long Term Actions)

Top 3 long term actions shared at report-out:

1. Financial incentives tied to protecting natural system services
2. Multi-media campaign that connects human and environmental health
3. Design & support eco-corridors

All provided long term actions:

- Tree ordinance
- Zoning change tied to health
- Multi-media campaign
- Solve funding - sustain
- Public – private partnerships!
- Establish community-wide champions
- Financial incentives to protect natural systems
- Eco-corridors
- Connect human & environmental health

Table 1 notes

Rachael Hamilton, Russ Barnett, Amanda Fuller, Matt Magan, Kasey Maier, Brent Bucknum

Strengths

- Collaboration among non-profits

- Resilience
- Progressive about data
- Knowledgeable
- Institutions that protect and improve the environment
- Cheap real estate, lots of vacant land
- Olmstead Parks / urban nature
- The river

Weaknesses / Challenges

- Development-centric land-use code
- Tree canopy
- Lack of public awareness
- Urban heat
- Lack of accountability
- Invasive plant species
- Failure to communicate and collaborate
- Geography
- Concentration of poverty

Short-term

- Cool roofs
- 2040 plan
- Pilot study of NOx / VOC
- Plant trees
- Enforcement of tree policies
- Action-oriented education
- Waterway restoration

Long-term

- Education – food literacy, green awareness
- Provide financial incentives / model benefits
- Incorporate eco-services into tax code
- Required / incentivized volunteerism
- Replace ash trees one-for-one
- Connect human health to environmental health
- Botanical gardens
- More green than not lawn
- Ecological corridor - connect green space
- Stream restoration as part of storm water plan

Table 2 Notes:

Cindi Sullivan, Terrell Holder, Dick Dennis, David Railey, David Phemister, Barbara Berman

Strengths

- Metro government
- Human resources
- Park system
- Zoo
- Cutting-edge science, tech, and medical
- MSD dollars
- Healthcare industry
- Money for planting trees
- Non-profits focused on natural systems
- Good partnerships (government & non-profits)
- City is good sized (not too big)
- Decent corporate citizens

Weaknesses

- Lack of money (government funding)
- Lack of tree ordinance
- Geography
- Disenfranchised communities
- Lack of public awareness
- Infrastructure
- Losing ground / lack of tree ordinance

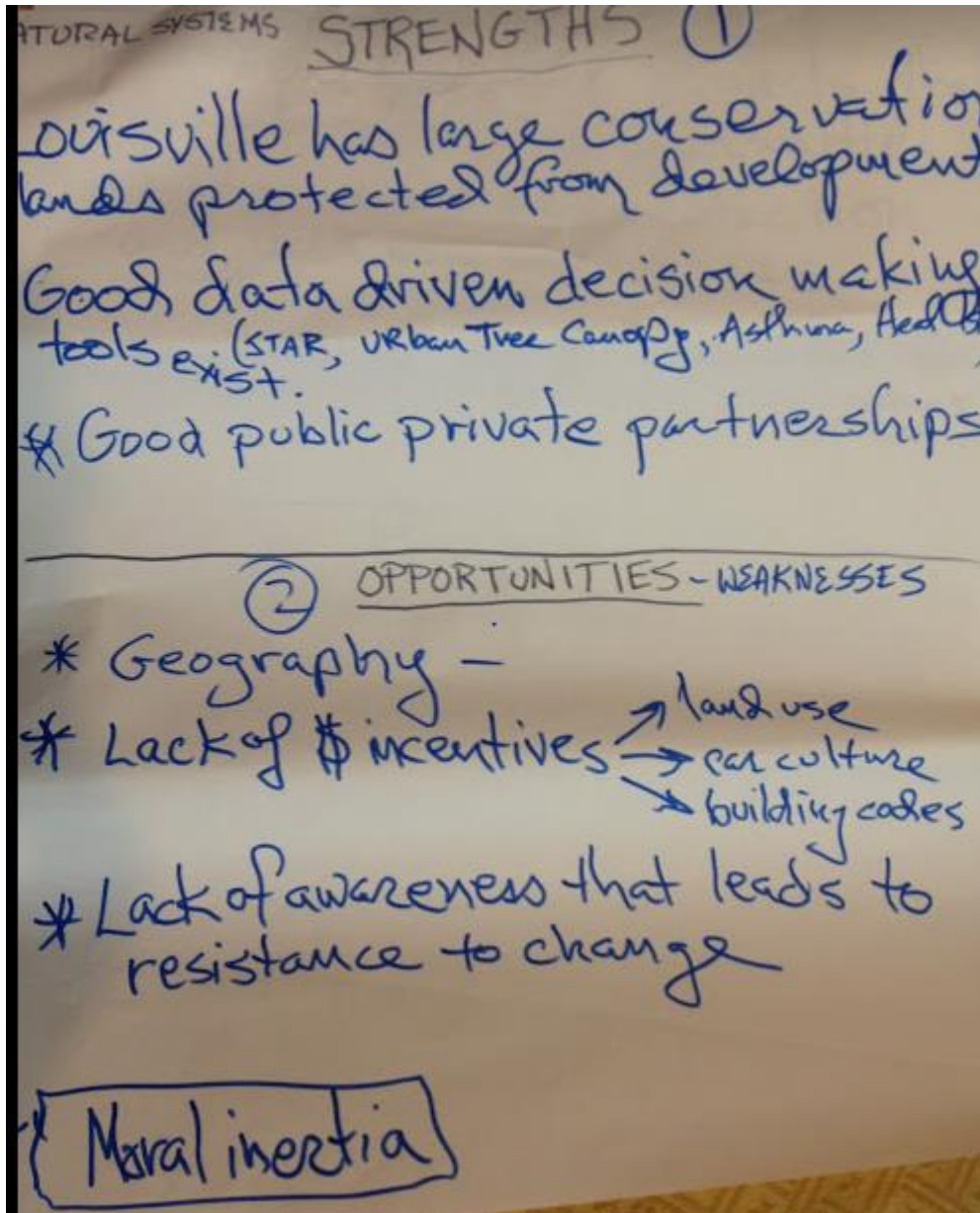
Short-term

- Citizen-driven projects (empower and engage)
- Reallocation / redirection of funding
- Projects to provide demonstration of education & health benefits
- Tree ordinance
- Change in land use code

Land-use

- More emphasis on public & private partnerships
- Solving the resource challenges in a sustainable way
- Establish neighborhood champions who voice that natural systems be a part of the solution

- More emphasis on cost benefit analysis of proposed projects



③ SHORT 1-3

implement planting projects that
are hands-on learning opportunities.
adopt powerful tree protection
and land use ordinances

pilot small grant opportunities to
help ~~small businesses~~ improve natural system
services.

④ LONG

Financial
- ~~Tax breaks~~ (incentives) tied to protecting
natural systems services.

- Multi media campaign that
connects human & environmental health.


- Design & support eco corridors

workable size / ~~land available~~ ^{STRENGTHS}
medical, science, tech
good partnerships public/private
* perks - urban nature
* promote data driven decisions
usable land available
value placed on quality of life

WEAKNESSES

- lacks
- x Economic incentive structures (that funding to make Δ)
- * ~~the culture of~~ the corporate culture
- x Resistance to Δ
- x Development centric land use code.
- * Geography
- * Lack of public awareness.
- Disenfranchised by lack of power
- x Degraded nat. systems

SHORT TERM

- pilot NOX + VOC +  = Ozone
- pilot cool, green, blue
- action oriented environ. educ
- plant stuff based on nat syst, ~~and~~ ^{via}
- strategie to incentivize reduced ^{which} ~~car~~ travel
- small grants to small businesses to reduce ^{emissions}
- empower coord w/ LSC & Sustainability office
- powerful tree protection & land use code (ordinance)
- starting projects to educate & engage & collect data.

- LONG TERM)
- Tree ordinance
 - Zoning change tied to health
 - Multi media campaign
 - Solve funding sources
 - ! public private partnerships
 - Establish community wide champions
 - \$ incentives to protect wet systems
 - Eco corridors
 - Connect human/environmental health

- ① - COLLABORATION AMONG NON-STATE
- RESILIENCE
 - PROGRESSIVE ABOUT DATA
 - ACCOUNTABLE
 - INSTITUTIONS THAT FEEL BETTER & INCREASE EFFICIENCY
 - GROWTH REPLENISH, LOTS OF VACANT LAND
 - OLDSIDE FARM / URBAN NATURE
 - THE RIVER

- ② - DEVELOPMENT - CATHOLIC LEAD THE WAY
- TREE CANOPY
 - LACK OF PUBLIC MARKET
 - URBAN HEAT
 - LACK OF ACCOUNTABILITY
 - WINDS THAT BLOW
 - FAILURE TO COMMUNICATE & COLLABORATE
 - GEOGRAPHY
 - CONCENTRATION OF POWER

- ③ - ~~WATER~~
- COOL ROADS
 - 2040 PLAN
 - PILOT STUDY ON IDENTIFY NO. / VOL
 - ~~PLANT TREES~~
 - ENFORCEMENT OF TREE POLICIES
 - ~~100~~
 - ACTION-ORIENTED EDUCATION
 - WIDENING RESTRICTIONS

- ④ - EDUCATION
- POLICE FINANCIAL INCENTIVES / MODEL BENEFITS
 - INCORPORATE ECO-SMALLS INTO TAX CODE
 - EQUIVOCALITY IN VALUATION
 - REPLANT ASH TREES
 - ~~1 FOR 1~~
 - COURT MANDATE TO PLANT TREES
 - BOTANICAL GARDEN
 - MORE GREEN THATS NOT LOW BUDGET
 - ~~WIDENING RESTRICTIONS~~
 - CARDS - CONCEPT DEVELOPMENT
 - TREE PLANTING PART OF DEVELOPMENT

- ① + Metro government
- + Human Resources
- + PARK System
- + Zoo
- ② + Cutting edge Science + Tech + ^{modern}
- + MSD dollars
- + Real Estate Industry
- + Money for planting trees
- ① + Non-profits foundation + ^{systems}
- + Good partnerships (public + private)
- ③ + City is good sized (manageable)
- + Decent Corporate Citizens

- ② + Lack of \$ (govt. City)
- + Lack of tree ordinance
- ② + Geography
- ③ + Disfranchised communities
- + Lack of public awareness
- + Infrastructure
- ① + Losing ground / lack of tree ordinance

- ③ + ① Citizen driven projects ^(community)
- + Redirection of funding
- ③ + ^{community} projects to provide ^{democratic} education + health benefits
- ③ + Tree ordinance /
- + Change in land use code

- ④ + More emphasis on public + private partnerships
- ① + Solving the resource ^{challenge} in a sustainable way
- ③ + Establish neighborhood champions who make that natural systems be a part of the solution
- + More emphasis on cost benefit analysis of proposed projects





List of registrants (actual attendees may have varied):

Becca	Barhorst	The Food Literacy Project at Oxmoor Farm
Russell	Barnett	University of Louisville
Barbara	Berman	HDNA Tree Reforestation
Regina	Blake	
Christy	Brown	
Brent	Bucknum	Hyphae Design Laboratory
Robin	Burke	YouthBuild Louisville
Veronica	Combs	Institute for Healthy Air, Water & Soil
Eleanor	Davenport	Kentucky College of Art + Design
Dick	Dennis	
Amanda	Fuller	
Mustafa	Gouverneur	
Francesca	Gross	The Nature Conservancy
Diane	Guenthner	KFTC & Thomas Jefferson Unitarian Church

Rachael	Hamilton	Louisville Metro Air Pollution Control District
Terrell	Holder	CART
Chuck	Lambert	Louisville Sustainability Council
Mary	Love	Kentuckians For The Commonwealth
Valerie	Magnuson	Louisville Grows
Joel	Paque	The Nature Conservancy
Judith	Petersen	Kentucky Waterways Alliance, Inc.
David	Phemister	The Nature Conservancy
Ted	Smith	Institute for Healthy Air, Water & Soil
Claude	Stephens	Bernheim Arboretum and Research Forest
Debby	Sublett	Thomas Jefferson UU Church
Cindi	Sullivan	TreesLouisville, Inc.
Wesley	Sydnor	MSD
Art	Williams	
Ward	Wilson	Eco-Tech Consultants, Inc.
Mimi	Zinniel	Olmsted Parks Conservancy